

# QS15

## PHOTO-ELECTRIC CONTROL UNIT

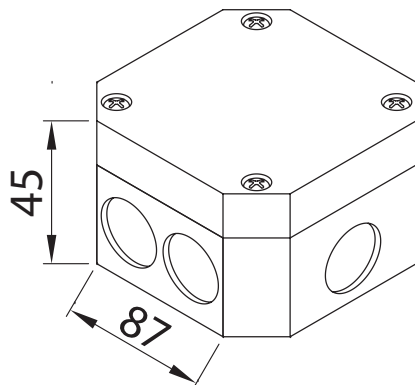
A Photo Electric Control Unit (PECU) is an electrical device which comprises a photo electric sensor that responds to variations in illuminance and a means for switching an electric load. Typically, a PECU will automatically switch on a lamp (or other electrical load) at sunset and then switch off again at sunrise.

The QS15 PECU is very convenient for wall or any other flat surface mounting - no additional junction boxes, strip connectors or brackets are needed! Six side inlets and one rear inlet ensures installation versatility. Side inlets are available in either 25 mm non-threaded or M20 threaded inlet with reinsertable knock-outs. Versatile and easy to install.

### FEATURES

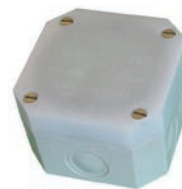
<b>Switching Capacity</b>	15 A max. at 230 VAC
<b>Operating Temperature</b>	-35°C to +70°C
<b>Light Sensitive Element</b>	Solidstate phototransistor
<b>Load Switch Mechanism</b>	Electromagnetic relay
<b>Lightning &amp; Surge Protection</b>	Metal-Oxide Varistor (MOV.) Since protection against lightning can vary greatly from region to region, PECUs MOVs are sized according to user specification
<b>UV Protection</b>	All PECUs (including wire sleeves) are made from UV stabilised polymers
<b>Reverse Switching</b>	PECUs are also available with reverse switch. I.e. switch on during daytime and off during night time

### DIMENSIONS



## SPECIFICATIONS

WEIGHT Unpacked	(g)	248	
	30		
	20		
	16		
	10		
	7		
	3		
	0.5		
<p>MAXIMUM CONTINUOUS CURRENT RATING AT 230 VAC (COS.1) RESISTIVE LOAD IN AMPERE</p> <p>Each bar indicates a different model of PECU</p>			
CONTACT CONFIGURATION (Normally)		CLOSED	NORMALLY OPEN CONTACT CONFIGURATION AVAILABLE ON REQUEST
SWITCH-ON LEVEL (±15%)	Lux	50	Switch ON levels of 10 to 500 Lux available on request
SWITCH-OFF LEVEL (±15%)	Lux	50	Switch OFF levels of 15 to 500 Lux available on request
STANDARD SWITCHING RATIO (±10%)		1:1	Switching ratio of 1:0.4 to 1:4 available on certain PECU models
STANDARD TIME DELAY (±20%)	Sec	20	Time delays from instantaneous to 120 seconds available on request
OPERATING VOLTAGE (±10%)	VAC	230	Other operating voltages available on request (E.g. 110 VAC, 250 VAC, etc)
POWER CONSUMPTION (±20%)	Watt	1.0	Based on 12 hr ON / 12 hr OFF cycle averaged
IP RATING	IP	66	IP65 also available
TIMER OPTION (4 - 8 hrs) (±20%) (indent only: QS15T)		YES	Factory preset, user adjustable



Characteristics and specifications may change without notice. All electrical installations / connections should be carried out by a competent person at all times. Application images are indicative only and may not contain actual Davis product. The information contained in this publication is typical and must not be interpreted as a guarantee of individual product performance.

## AUSTRALIA

HEAD OFFICE: Tel: +61 (7) 3712 8988 Fax: +61 (7) 3272 8988  
SALES OFFICES (all states): 1300 851 001

E-mail: [australia@davislighting.com](mailto:australia@davislighting.com)  
Website: [www.davislighting.com](http://www.davislighting.com)