

# ELCOP Slimline LED EXIT LIGHT

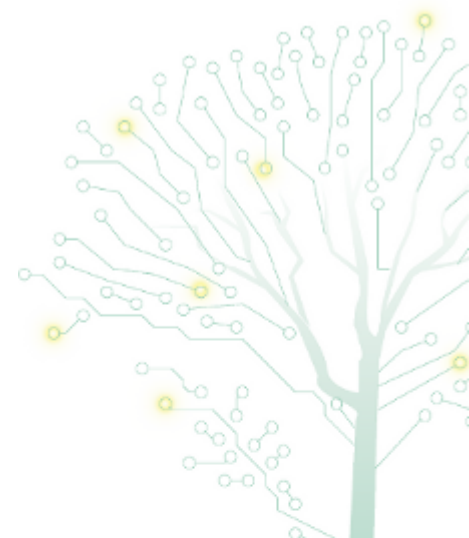


This Slimline Exit Light has a sleek profile with refined design which enables it to be seamlessly integrated product that can be used in modern commercial interior, making it ideal for use in all areas where both safety and style are paramount.

This product is unique as it has built-in non-maintained LED Spot emergencies to give it a class-leading photometric classification of D0=E2.5;C90=E2.0

## Slimline (Razor) Exit Light LED

- Edgelite with LED Emergencies. Photometric
  - Classification D0=E2.5;C90=E2.0
  - Maintained or Non-maintained operation.
  - Replaceable easy fit, quick release decals.
  - Flex and Plug.
  - 24M viewing distance.
  - High temperature Lithium battery.
  - Total power consumption 4W.
- AS/NZS 2293.



### Pictograms Included

RUNNING MAN+DOOR



RUNNING MAN+DOOR+RIGHT ARROW



RUNNING MAN+DOOR+LEFT ARROW



### TECHNICAL DATA

Power Consumption	: 4W
Power Supply	: AC110V/AC220V;50HZ/60HZ
Lighting Resource	: LED
Standby Time	: >3Hours
Charging Time	: <16Hours
Battery Type	: Lithium
Battery Capacity	: 3.7V/2200mAH
Safety Features	: Low Volt Cut-Off Preventing Battery Overdischarge Preventing
Material	Body : PC Diffuser : PE
Mounting	: Wall Or Ceiling Surface
Cable Entry	: Ø21.00mm Hole
Size:	: 350*220*73mm
Weight	: 1.10kgs
Warranty	: 2Years(Battery 1 Year)
Rating	: D0=E2.5;C90=E2.0