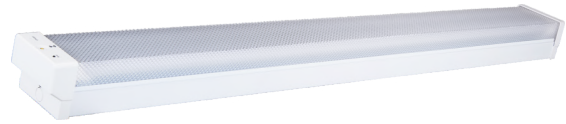


# EMERGENCY BATTEN - Diffuser

## FEATURE

- Cost-effective light-line solution for industrial, commercial and other applications;
- Flexible solution;
- Energy-saving and environmental protection.



Item Code	SP220PSEM
Input Voltage	220-240V
Frequency	50/60Hz
Dimension	1247*120*88mm
Material	Metal+PS
Operating Temp.	0-40 °C
AC Stage LED Power	2*18W LED Tube
DC Stage Light Source	3W LED Chip (DC Wattage: 1.7W)
Battery	4.8V 1800mAh NI-MM
Charge Time	16 Hours
Discharge Time	2 Hours
Emergency Lumen	140lm
LED Lifespan	40, 000 Hours
Work Mode	Maintain
Installation	Surface Mounting
Indicator	Red-Charging
Test	Manual Test Switch
Connection	Terminal Block
Protection	Over-Charge /Over-Discharge
Classification	C0:D25,C90:D25
Standard	As2293 IEC60598-2-22



Ta 0°C-40°C



Tested By 

Certified By   
AS/NZS 2293 CERTIFIED