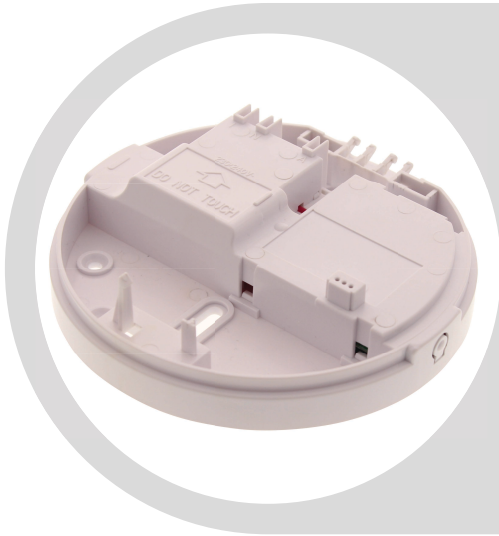




SMOKE ALARMS

Data Sheet



RRB

Relay Base for Main Powered Smoke Alarm
For use with R240 & R240RC

Key Information

- Product brand - Red Smoke Alarms
- Product / Component - Relay Base
- Device application - Mounting
- Colour - White (RAL 9003)
- Quantity per set - Set of 1
- Type of packing - Carton

Complementary

[US] rated supply voltage	220...240 V ac, 50 Hz
Number of device	40pcs smoke alarm
Operating distance	150meters
Connection Type	Hard-wire interconnect
Compatible	Red Smoke Model R240 Red Smoke Model R240RC
Relay Rating	250V ac, 2A
Relay Contacts:	NO / COM / NC contacts (voltage-free)
Remote Input:	Dry contact momentary switch (for Remote Test / Silence function)
Connections - Terminals	For live: Screw terminal with 2 x 1.5mm ² wiring capacity For neutral: Screw terminal with 2 x 1.5mm ² wiring capacity For earth loop: Screw terminal with 2 x 1.5mm ² wiring capacity For interconnect: Screw terminal with 2 x 1.5mm ² wiring capacity
Type of installation	Indoor
Diameter	140 mm
Height	55 mm

Environment

Ambient air temperature for operation	0° - 45°C
Relative humidity	5% - 95%
Standards	AS/NZS 4268:2017

Offer Sustainability

Sustainable offer status	Not a Green Premium Product
--------------------------	-----------------------------

The information provided in this documentation contains general descriptions and/or technical characteristics of the performance of the products contained herein. This documentation is not intended as a substitute for and is not to be used for determining suitability or reliability of these products for specific user applications. It is the duty of any such user or integrator to perform the appropriate and complete risk analysis, evaluation and testing of the products with respect to the relevant specific application or use thereof.

Neither Red Smoke Alarms PTY. LTD nor any of its affiliates or subsidiaries shall be responsible or liable for misuse of the information contained herein.



SMOKE ALARMS

Data Sheet
RRB

The information provided in this documentation contains general descriptions and/or technical characteristics of the performance of the products contained herein. This documentation is not intended as a substitute for and is not to be used for determining suitability of reliability of these products for specific user applications. It is the duty of any such user or integrator to perform the appropriate and complete risk analysis, evaluation and testing of the products with respect to the relevant specific application or use thereof.

Neither Red Smoke Alarms PTY. LTD nor any of its affiliates or subsidiaries shall be responsible or liable for misuse of the information contained herein.