

CanSweep®

SWEEP INLET VALVE



Easy operation

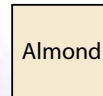
Horizontal rear outlet for easy installation

THE EASY OPEN-N-CLOSE VALVE

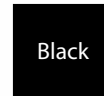
- Modern design with textured appearance
- Large outlet design for maximum airflow
- Zero loss of suction



845620W

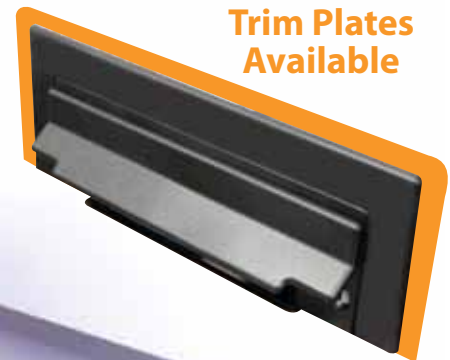


845620A



845620BLK

Trim Plates Available



Manufactured in Canada

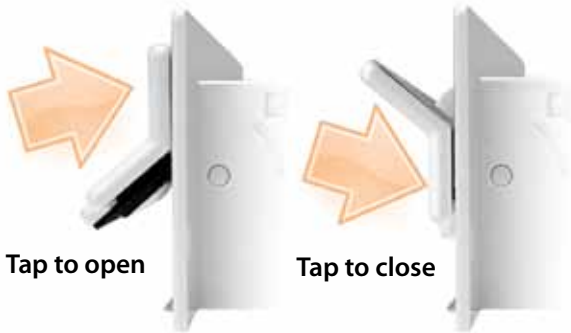
www.vaculine.com

Vaculine®
Central Vacuum Valves, Fittings & Accessories



CanSweep®

SWEEP INLET VALVE



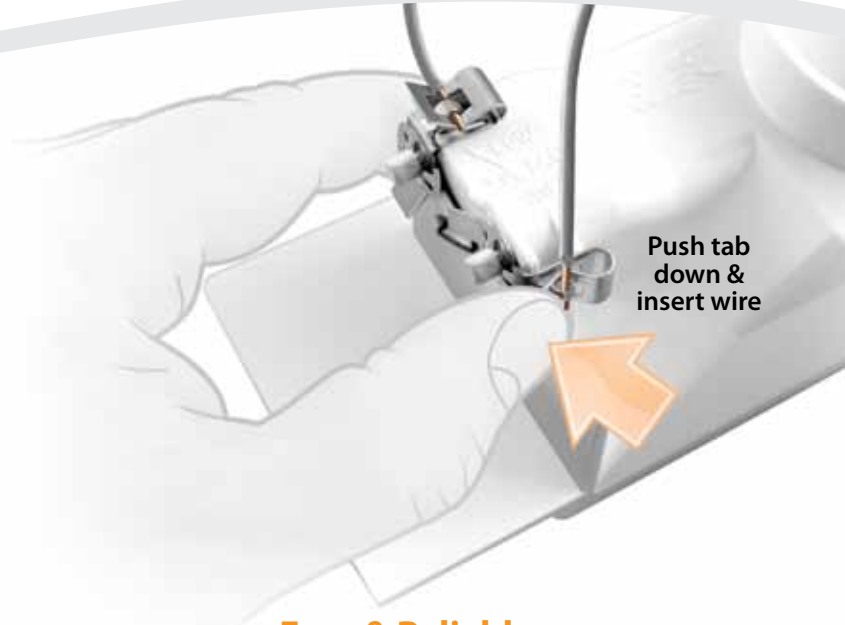
Easy Operation

The CanSweep® opens and closes with a simple light toe tap design. Tap up to open and tap down to close.



Maximum Airflow

Designed with minimal airflow restriction, allowing maximum airflow for effective cleaning.



Easy & Reliable Wiring Connections

The CanSweep® comes with a push tab wire clip that securely holds low volt wires in place. No tools required.



Easy Installation

The horizontal rear outlet allows for easy installation in tight spaces while allowing debris to exit directly into the piping system.